



Pioneering the World's First Neuro-Inclusive, AI-Powered Climate Education Platform

How Heal Earth is setting the benchmark for inclusive, ethical, and impactful EdTech that empowers every learner to become a climate champion.

www.healearth.co | info@healearth.co | +447575828309

71-75 Shelton St, London WC2H 9JQ

Understanding Neuro-Inclusivity in AI-Powered Education

The Challenge

Today's AI-driven learning systems risk replicating exclusion if not built with neurodiversity in mind. Millions of learners, especially autistic children, are left behind in traditional climate education approaches.

True Inclusivity

Neuro-inclusivity means adapting to different cognitive profiles, processing styles, and sensory needs from the ground up, not as an afterthought.

Our Foundation

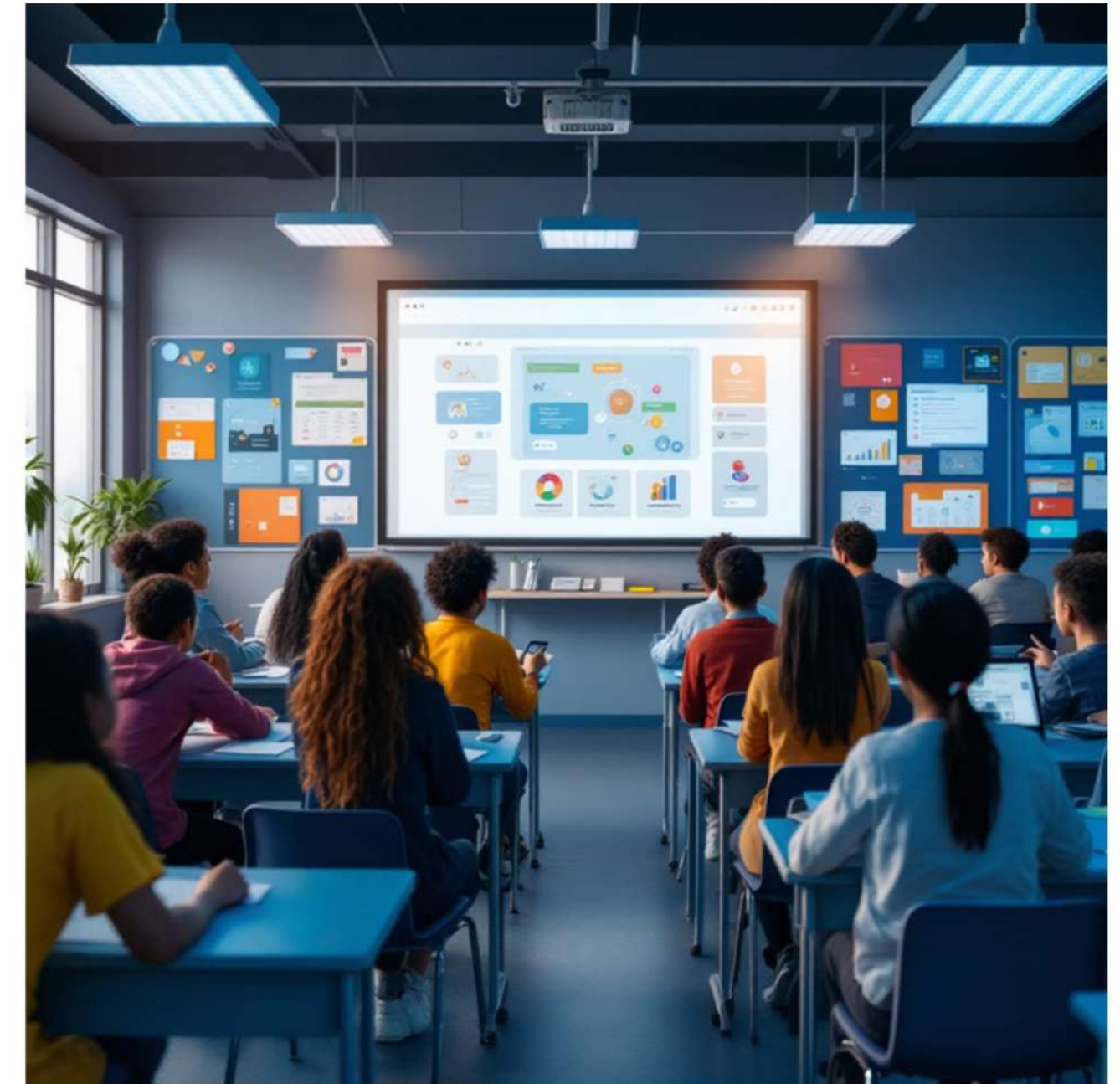
Heal Earth's platform was co-designed with neurodivergent learners and educators, embedding inclusivity as the foundation of every feature and interaction.



AI's Transformative Strength: Multi-Modal Learning Journeys

Tailoring Education Through Multiple Modalities

- AI adapts content across gamification, VR experiences, kinesthetic activities, visual storytelling, and narrative modes.
- Ensures climate knowledge is accessible to all learners – mainstream and neurodivergent.
- Reinforces retention by matching learning style to cognitive profile.
- Moves beyond “one-size-fits-all” to personalized climate literacy journeys that inspire action.



Transforming Learners into Climate Champions



AI That Empowers Action, Not Just Knowledge

- Heal Earth x STEMPOINT Placement: Post A-Level students gain subject knowledge via the Heal Earth Learning Hub and apply it through ecosystem restoration and biodiversity projects.
- Practical Outcomes: Students deliver scientific posters and reports, created legacy projects and participated in the European Climate Pact Youth Peer Parliament while directly contributing to local conservation efforts.
- Inclusive by Design: Neuro-inclusive platforms ensure every learner can become a climate champion.



From Digital Learning to Real-World Impact



AI-Powered Learning

Students engage with personalized climate education modules tailored to their cognitive profile and learning preferences.



Community Mobilization

AI platforms mobilize schools and communities into biodiversity projects, carbon reduction, and local adaptation initiatives.



Measurable Climate Action

Students move seamlessly to hands-on projects like rain gardens, rewilding, and biodiversity restoration with quantifiable CO₂ savings.

This transforms digital learning into digital empowerment, climate education that drives real-world, measurable environmental action.



Heal Earth Setting the Benchmark

- Authenticity with Impact: Founded and designed by an autistic educator, embedding accessibility, empathy, and lived-experience leadership.
- Global Recognition.
- Knowledge to Action: From the Learning Hub to community restoration projects, Heal Earth connects education to measurable climate impact.
- Aligned with Systems: Naturally fits SDG 4.7 & 13, ESG frameworks, and ongoing curriculum reforms.



Proven Lessons from Heal Earth

Co-Design is Non-Negotiable

- 1 Educational tools must be shaped *with* learners, not *for* them. Direct involvement of neurodivergent students and educators ensures authentic inclusivity from concept to deployment.

Trust Matters for Adoption

- 2 Embedding CPD-certified teacher training ensures widespread adoption at scale. Educators need confidence and competence to implement AI-powered inclusive tools effectively.

Hybrid Learning Works

- 3 Digital AI combined with real-world kinesthetic projects creates the perfect balance for engagement and retention across all learning styles.

Heal Earth has been successfully piloted both locally and globally, and showcased at global forums, proving both scalability and credibility.





Neurodiverse Leadership: The Ethical AI Advantage



Systems Thinking

Neurodiverse leaders naturally approach complex problems with innovative systems perspectives, essential for developing ethical AI solutions.



Resilience & Innovation

Their lived experience with overcoming challenges translates into creative problem-solving capabilities vital for building inclusive technology.



Bias Prevention

Neurodiverse leadership ensures bias and exclusion are challenged from the design stage, creating more equitable AI systems.

As a **neurodivergent-led organization**, Heal Earth ensures AI development is guided by values of equity, inclusion, and planetary stewardship.

The Future is Now

Why Heal Earth Represents the Future of Inclusive AI-EdTech

01

Inevitable Convergence

The convergence of AI, neuro-inclusivity, and climate education isn't optional, it's inevitable for meaningful educational impact.

02

First-Mover Advantage

Heal Earth is already validated through demand by 500+ schools, CPD certification, and global recognition (UN, COP, STEMPOINT).

03

Proven Impact Model

Our approach links personalized digital learning → community action → measurable climate impact.

If the future of education is AI-powered and inclusive, then Heal Earth is already showing the world how to build it, today. Join us on the journey: info@healearth.co



Neuro-Inclusive by Design

At Heal Earth, we embed neuro-inclusion into the heart of everything we do. From our AI-powered learning platform to teacher training and real-world storytelling, every element is designed to support both autistic and mainstream learners.



Learning Hub with Embedded Supports

Our Learning Hub follows a consistent framework:

- 1 **Prepare**
- 2 **Learn**
- 3 **Practice**
- 4 **Reflect**

This structure reduces cognitive load, enhances executive functioning, and supports self-regulation across all modules.



Impact Intelligence: Turning Learning Data into ESG-Grade Outcomes



Heal Earth's Planet Pulse approach; measure what matters, report what counts:

- School-to-society signal: Analytics connect student growth → household awareness → community resilience, creating a measurable climate ROI.
- Projected climate impact: At 3,000 schools (~900k students), potential to influence households and avoid up to ~1.35M tCO₂e/year when initiatives scale.
- Enterprise-ready reporting: Activities auto-map to SDG 4.7 & SDG 13 and support ESG/CSR evidence for partners and ministries.



Global Leadership in Ethical AI + Climate EdTech

A Digital Benchmark for Inclusive Impact



- Recognized by UN, COP forums, Teacher COP 29 as thought leader in climate education.
- Aligned with SDGs 4.7 (Education) & 13 (Climate Action) and ESG reporting frameworks.
- Heal Earth is not just EdTech – it's the world's first ethical, inclusive ClimateTech Education standard.





Connect with Heal Earth

Ready to pioneer inclusive climate education?

Join us in revolutionizing how we prepare the next generation of climate leaders through neuro-inclusive, AI-powered education.

Whether you're an education policymaker, EdTech investor, school leader, or climate program director, we're here to collaborate on building a more inclusive and impactful future.

Get in Touch

www.healearth.co

info@healearth.co

+447575828309

Let's discuss how we can build together the world's first neuro-inclusive climate education platform powered by AI.

